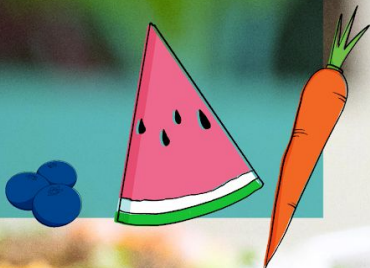


# SUMMER NUTRITION SUMMIT

DECEMBER 9-10, 2024



# **Nourishing the Future: Building Blocks for Sustainable Rural Non-Congregate Summer Programs**

Summer Nutrition Summit 2024



# Agenda

- Introductions & Starting Questions
- Overview of our Panelists Summer Programs
- Open Q&A
  - Start thinking about your questions now!



# Meet Our Panelists



**Candy Biehle**  
Child Nutrition Director  
Smithville Independent  
Schools, Texas



**Constance Moore**  
Sr. Food Compliance  
Officer  
YMCA of Memphis and  
the Mid-South,  
Tennessee



**Kristy Nelson**  
Food Service Director  
Livingston County  
Schools, Kentucky

# Disclaimer

Our speakers represent their own experience with non-congregate summer meal programs in their states and localities. Certain program models and implementation methods may be restricted in some states. Check with your local state agency before implementing any new meal service models or implementation methods.

# MENTIMETER QUESTIONS

- Join at [menti.com](https://menti.com) | use code 6469 6229 or scan the QR code here:



# Smithville Independent School District

Candy Biehle  
Child Nutrition Director



# Smithville Independent School District

## Overview:

- Location: Smithville Independent School District (SISD) in Smithville, Texas.
- Timeframe: Meals served during June and July.
- Meal Type: Non-Congregate (NC) meals
- Meal Components:
  - Frozen entrees (ready to heat and eat)
  - Fresh produce (fruits and vegetables)
  - Milk





# Smithville Independent School District

## Participation and Impact

- Increased Participation:
  - Meal participation increased by **over 75%** when serving NC meals last summer.
- Wider Reach:
  - NC model helped reach more students and families across Smithville, including those who couldn't attend traditional meal sites.

## In-Town Meal Sites:

- Meals served at local community locations (e.g., parks, schools, community centers)
- Mobile Meal Delivery:
  - Meals served at bus stops outside of town to reach students in rural areas.
- Convenient Access:
  - Families can pick up meals at multiple times and locations, making it easier for everyone to participate.



# Smithville Independent Schools

## Looking Ahead

- Future Goals:
  - Expand program participation by adding more meal sites or expanding bus routes.
  - Continue **involving high school students** to develop future leaders and workforce-ready individuals.
  - **Enhance meal offerings** to include more diverse and regionally preferred meal options.



# YMCA of Memphis and the Mid-South

Constance Moore  
Sr. Food Compliance Officer



# YMCA of Memphis and the Mid-South

## Overview:

- Became a food sponsor during the pandemic and has served 10M+ meals since 2020.
- Served non-congregate (NC) at 12 sites in Tennessee and 4 sites in Mississippi.
- Meals were served slightly differently in each state:
  - TN: Breakfast and Lunch for 7 days and all shelf stable options
  - MS: Breakfast and Lunch for 5 days; not all options were shelf stable.
  - Parent/Guardian pick up was used across all sites



# YMCA of Memphis and the Mid-South



## Outreach:

- Heavily advertised the program via billboards, radio announcements and yard signs.

## Outcomes:

- Served 338,998 NC meals in Tennessee over a 10 week period
- Served 42,290 NC meals in Mississippi in the month of July.
  - Approval was delayed in MS until mid-June

## Future Plans:

- Expand sites in TN by expanding rural reach
- Begin service in MS as soon as school ends and increase sites

# YMCA of Memphis and the Mid-South

## Tips for Sustainability:

- Plan for summer NOW
  - Do you know if you're eligible to serve?
  - What is the application process?
  - Consider organizational capacity and decide logistics for your sites.
- Do not over expand
  - Be realistic in your approach.
- Execute
  - Put your plan into action! Actively monitor how many meals you serve daily versus how many you intend to serve under a NC model.





# SUMMER NUTRITION PROGRAM

# ABOUT US

- Rural school district located in far Western Kentucky serving approximately 1000 students.
- The county spans 342 square miles, surrounded by other rural Kentucky counties.
- The district has participated non-congregate SFSP since 2019.
- For the 2024 SFSP, the district provide a 7 day meal pack once a week.





# SUMMER STATS



**75,000+**

*Meals served during SFSP*



**11**

*Community Sponsors*



**12**

*Paid Employees*



**76**

*Days of SFSP fun*

# Questions for Panelists?

