



Strategies for Finding Success with the Community Eligibility Provision

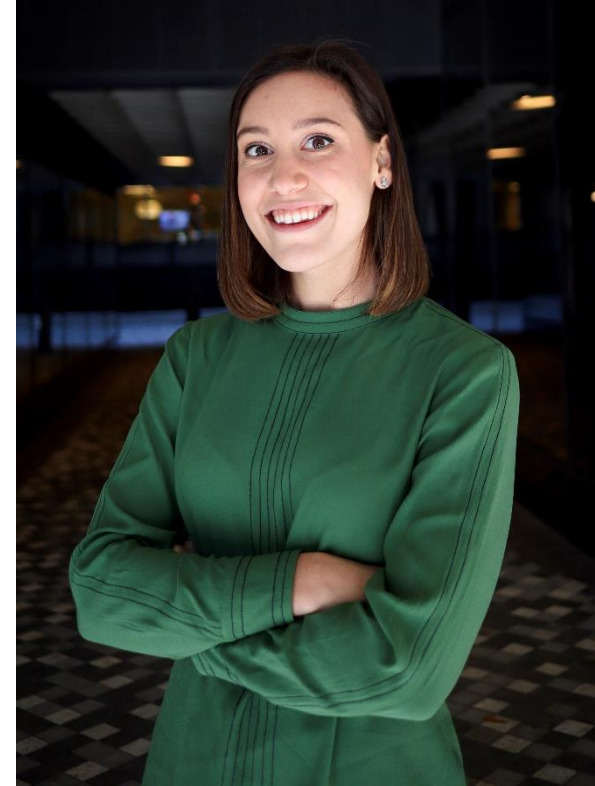
December 17, 2019



Today's Speakers



Donna Martin, EdS, RDN, LD, SNS, FAND
Director, School Nutrition Program
Burke County Public Schools (GA)



Emily Pia
Program Manager
No Kid Hungry's Center for Best Practices



Agenda

- CEP Basics
- Strategies for...
 - Increasing ISP
 - Maximizing Participation
 - Managing Program Costs
 - Generating Additional Revenue
- Q&A





Check out our Companion Resource!

[Strategies for Finding Success
with CEP](#)

Featured on No Kid Hungry's new
resource center:

[http://bestpractices.nokidhungry.org/
source-center](http://bestpractices.nokidhungry.org/resource-center)

Community Eligibility Provision (CEP)

Enables high-need schools to provide breakfast and lunch to all students at no cost to them.

- Students face reduced stigma + no more lunch debt
- Decreased administrative burden: no school meals applications!
- Schools often see increased participation

Schools, or groups of schools, must have an “**Identified Student Percentage**” (ISP) of **40%** to be eligible to operate CEP.

- ISP = percentage of all students who are categorically eligible for free school meals
- Grouping allows for some schools to be below the 40% threshold as long as the weighted average of the group is at least 40%.

CEP operates on a **4-year cycle**.



Identified Student Percentage (ISP)

Categorically-eligible students are **directly certified** by their participation (or a household member's participation) in the following programs:

- **SNAP**: Supplemental Nutrition Assistance Program
- **TANF**: Temporary Assistance for Needy Families
- **FDPIR**: Food Distribution Program on Indian Reservations
- **Medicaid** (in certain states)

Children are also categorically-eligible if they are:

- **In foster care**
- **Homeless**
- **In Head Start/Early Head Start**
- **Migrants**

CEP Reimbursement Pattern

Two categories of reimbursement: Free & Paid

Free reimbursement rate = ISP x 1.6

Paid reimbursement rate = 100% – (ISP x 1.6)

“Magic ISP” = 62.5% (62.5% x 1.6 =100% of meals reimbursed at the federal free rate)

ISP	x 1.6 Multiplier	% of Meals Reimbursed at "Free" rate	% of Meals Reimbursed at "Paid" Rate
40%	x1.6	64%	36%
45%	x1.6	72%	28%
50%	x1.6	80%	20%
55%	x1.6	88%	12%
60%	x1.6	96%	4%
65%	x1.6	100%	0%

Increasing Your ISP

- Find out what student data your state includes in their direct certification system.
- Utilize connections with social workers and homeless liaisons.
- Apply extended categorical eligibility (household eligibility).
- Examine all potential matches.
- Conduct direct certification as often as possible.



You can work with your state agency to start a new 4-year CEP cycle if you can demonstrate an increase in ISP, which will establish a higher reimbursement rate.

Identified Student Percentage (ISP)

Categorically-eligible students are **directly certified** by their participation (or a household member's participation) in the following programs:

- **SNAP**: Supplemental Nutrition Assistance Program
- **TANF**: Temporary Assistance for Needy Families
- **FDPIR**: Food Distribution Program on Indian Reservations
- **Medicaid** (in certain states)

Children are also categorically-eligible if they are:

- **In foster care**
- **Homeless**
- **In Head Start/Early Head Start**
- **Migrants**

Increasing Your ISP

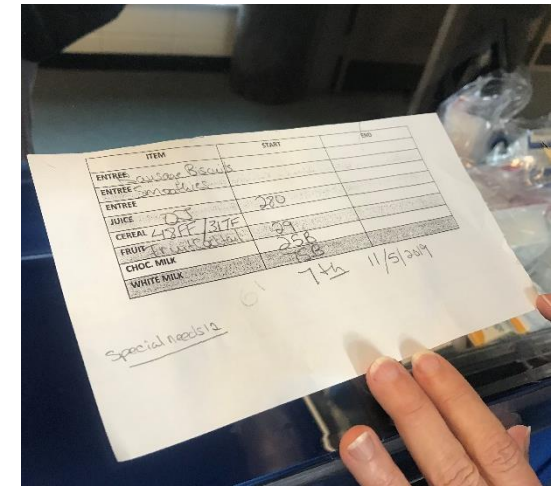
- Find out what student data your state includes in their direct certification system.
- Utilize connections with social workers and homeless liaisons.
- Apply extended categorical eligibility (household eligibility).
- Examine all potential matches.
- Conduct direct certification as often as possible.



You can work with your state agency to start a new 4-year CEP cycle if you can demonstrate an increase in ISP, which will establish a higher reimbursement rate.

Increasing Participation

- Implement Breakfast After the Bell
 - Breakfast in the Classroom
 - Grab n Go
 - Second Chance Breakfast
- Add points of service
- Tally reimbursable meals served to speed up lines
- Incorporate student feedback



Managing Program Costs

Employ students to work in the school nutrition program.



More strategies:

Calculate a 'per plate' cost and compare it to food and labor costs.

Monitor food waste.

Join a buying co-op.

Leverage USDA Foods.

Adhere to conservative hiring practices.

Generating Additional Revenue



Provide afterschool & summer meals



Prepare student meals for field trips



Questions?

Additional Resources

- No Kid Hungry [Strategies for Finding Success with CEP](#)
- USDA [CEP resource page](#)
- FRAC [Community Eligibility Database](#)
- FRAC [Community Eligibility: The Key to Hunger-Free Schools, SY2018-2019](#)
- FRAC [Community Eligibility: Making it Work with Lower ISPs](#)
- Urban Institute [Measuring Student Poverty](#)
 - Provides information about how each state distributes state education funding and what that means for CEP schools